

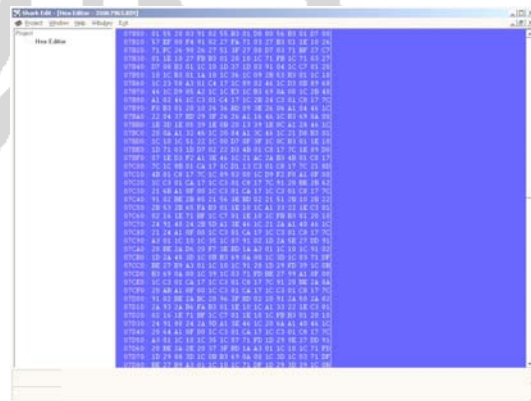
SHARK EDIT

With the introduction of complex Electronic Fuel Injection, performance tuning entered the world of the black arts. Practiced by fewer and fewer as the technical and financial barriers to tune a vehicle grew ever higher and higher.

Recent developments have included RSA encryption and sophisticated anti-tamper functions, driving down the availability of comprehensive tuning at the same time as it drives the prices up.

Let's face it – your vehicle manufacturer simply doesn't want you to tune the car YOU own.

I do.



Announcing **SHARK EDIT** from Bonneville Motor Werks. The complete *open-architecture* performance tuning package for your vehicle.

Available **01 JUN 2008** for OBD-I vehicles thru 1995 models.

Available **01 JUL 2008** for most OBD-II BMW vehicles.

SHARK EDIT is currently planned for compatibility with the following vehicles:

- ✓ Most 1984 thru 1995 vehicles equipped with the Bosch Motronic EFI system; including BMW, Ferrari and Porsche.
- ✓ Most OBD-II BMW vehicles from 1996 thru 2008, including those equipped with the following DME/DDE control units:
 - MS41.1 and MS41.2
 - MS42
 - MS43
 - MS45.0 and MS45.1
 - MSV80
 - MSD80
 - MSS52
 - MSS54
 - MSS54HP
 - MSS65
 - MSS60
 - M5.2
 - M5.2.1
 - ME7.2
 - ME9 variants for 4, 8, and 12 cylinder engines
 - EMS2000 (for Mini)
 - EMS5150 (for Mini)
 - DDE5 diesels
 - DDE6 diesels

SHARK EDIT features include:

- ✓ Integrated flash programming suite utilizing serial, USB and our new Bluetooth CAN-capable interfaces.
- ✓ Remote programming via PC or USB Shark Injector™
- ✓ Pricing starting at **\$299**.